

# MONTHLY MEMBERSHIP PROGRESS REPORT

LOCATION TENNESSEE

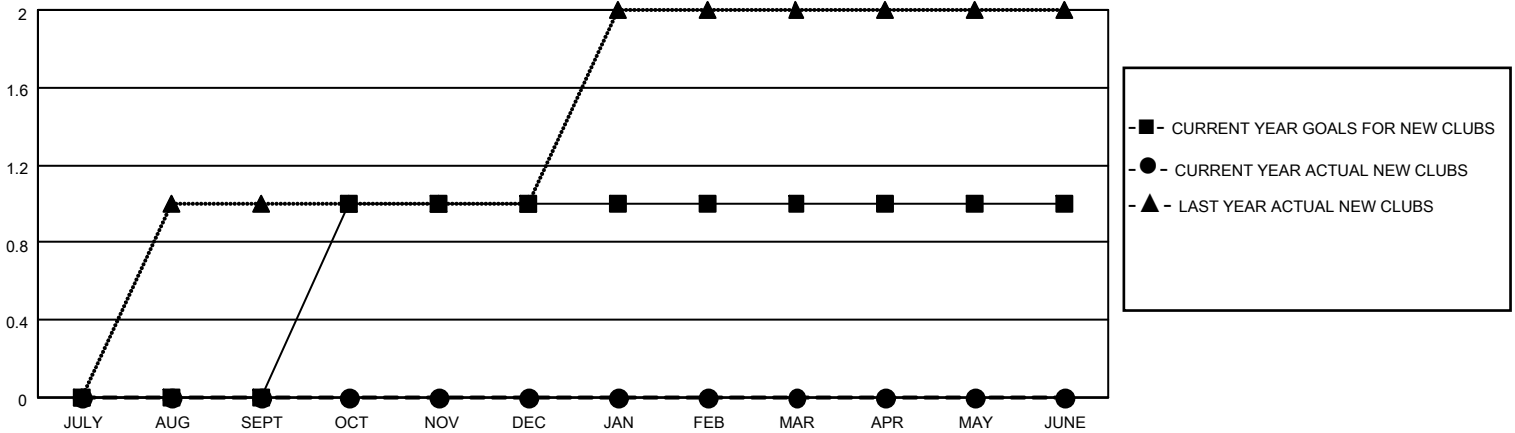
District 12 N

Results as of: 6/30/2023

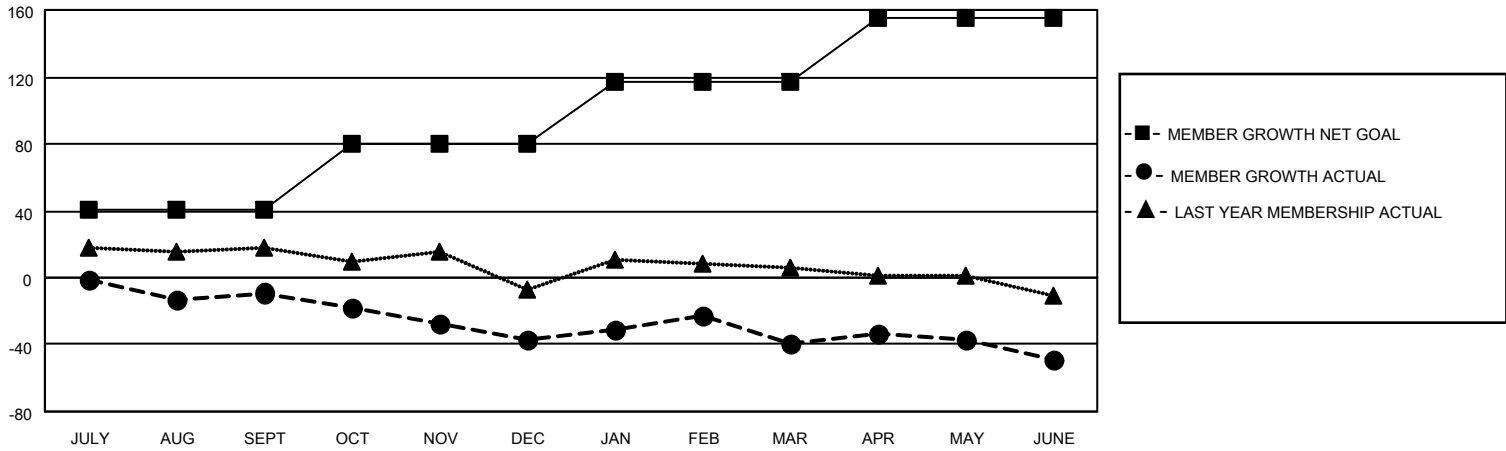
Clubs			
RESULTS FOR 2022-2023			
QUARTER	NEW CLUB GOAL	NEW CLUBS	DROPPED CLUBS
JULY/AUG/SEPT	0	0	0
OCT/NOV/DEC	1	0	0
JAN/FEB/MAR	0	0	2
APR/MAY/JUNE	0	0	1

Members			
RESULTS FOR 2022-2023			
QUARTER	MEMBER GROWTH NET GOAL	MEMBER GROWTH ACTUAL	DROPPED MEMBERS ACTUAL (including transfers)
JULY/AUG/SEPT	41	15	23
OCT/NOV/DEC	39	20	47
JAN/FEB/MAR	37	32	33
APR/MAY/JUNE	38	24	30

**GOALS AND ACTUAL NEW CLUBS CUMULATIVE**



**GOALS AND ACTUAL MEMBERS CUMULATIVE**



**DROPPED CLUBS: 3**

**25 CLUBS OF 42 ADDED 1 OR MORE NEW MEMBERS**

**GENDER DISTRIBUTION**

MALE	478 (58.58%)
FEMALE	338 (41.42%)
NON BINARY	0 (0.00%)
PREFER NOT TO ANSWER	0 (0.00%)

**DROPPED MEMBERS**

[CLICK HERE FOR CUMULATIVE MEMBERSHIP DATA](#)

DECEASED	18
CLUB CANCELLED	0
OTHER	115
<b>TOTAL</b>	<b>133</b>

TOTAL FAMILY UNIT MEMBERS 227

FAMILY MEMBERS PAYING HALF DUES 116